

EQUIP. TYPE *390A10RR* EXP. NO.

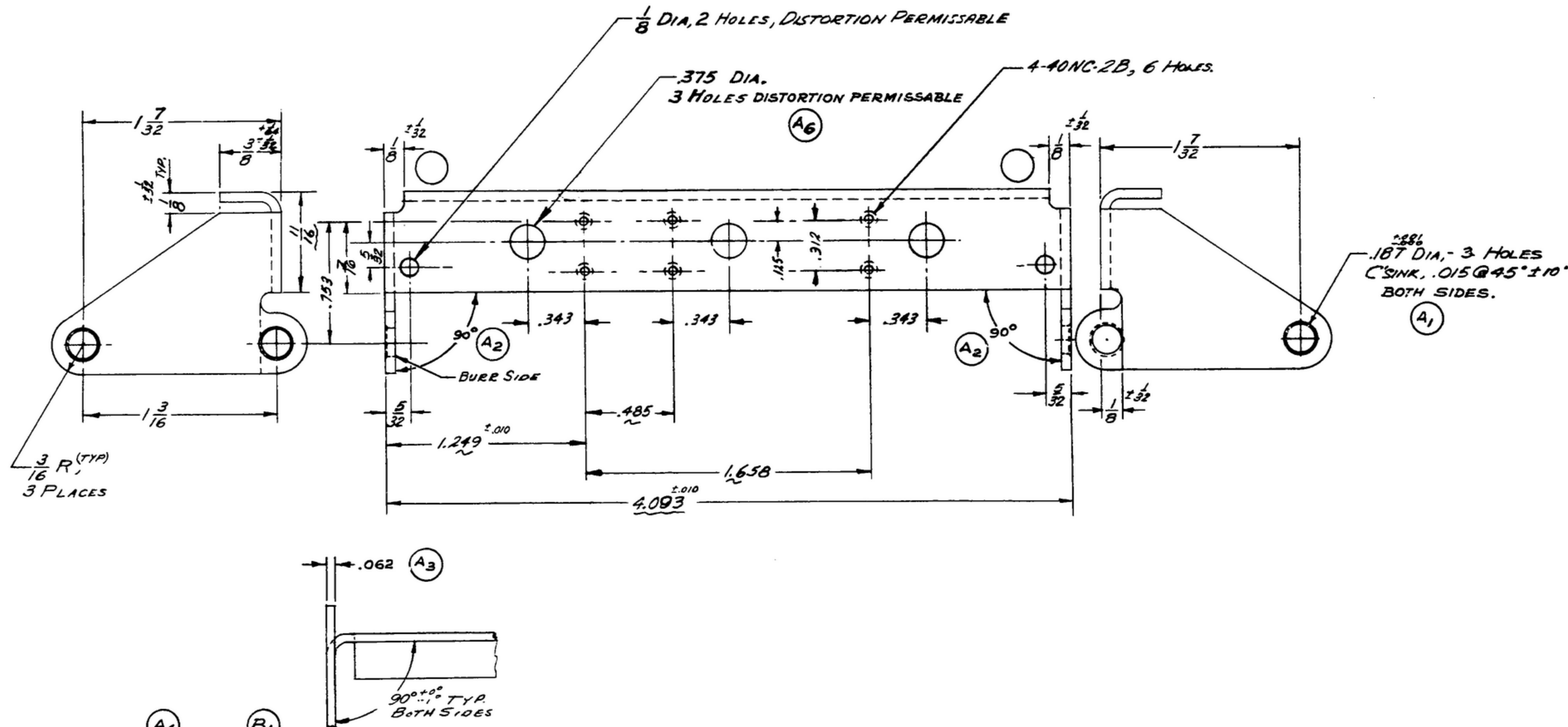
COL. 540 7880 003

NOTICE: WHEN GOVERNMENT DRAWINGS, SPECIFICATIONS, OR OTHER DATA ARE USED FOR ANY PURPOSE OTHER THAN IN CONNECTION WITH A SPECIFICALLY RELATED GOVERNMENT PROCUREMENT OPERATION, THE UNITED STATES GOVERNMENT THEREBY INCURS NO RESPONSIBILITY FOR ANY DELAYING, WITHHELD, AND THE FACT THAT THE GOVERNMENT MAY HAVE FORMULATED, FURNISHED, OR IN ANY WAY SUPPLIED THE SAID DRAWINGS, SPECIFICATIONS, OR OTHER DATA IS NOT TO BE REGARDED AS IMPLICATION OR ENDORSEMENT BY ANY BUREAU LICENSING THE HOLDER OR ANY OTHER PERSON OR CORPORATION, OR CONFERRING ANY RIGHTS OR PRIVILEGES TO REPRODUCE, TRANSMIT, USE, OR SELL ANY PATENTED INVENTION THAT MAY IN ANY WAY BE RELATED THEREBY.

THIS DOCUMENT HAS BEEN PURCHASED BY THE GOVERNMENT AND MAY BE REPRODUCED AND USED IN CONNECTION WITH ANY GOVERNMENT PROCUREMENT OR MAINTENANCE OPERATION.

*FOR INFORMATION ONLY. CONTRACTOR MAY AT HIS OPTION DEVIATE FROM THESE PROCESS DETAILS.

* SWE APPROVAL		REVISIONS			
SYM	PR10042-B	SYM	DESCRIPTION	DATE	APPROVAL
		A ₁	-ADDED NOTATION "BOTH SIDED"	27 OCT. 59	42428-PC-59-AI-31 REV'D. PME
		A ₂	-ADDED VIEW OF RADIUS $\frac{1}{8}$ " DIA.		
		A ₃	-ADDED THK DIM.; A ₄ -301 WAS 302		
		A ₅	-ADDED APPL. SM-C-343631;		
		A ₆	-ADDED NOTATION "DISTORTION PERM."		
B ₁	CA 84751	B ₁	B ₁ -MATERIAL 302 COND. ANNEALED WAS 301 COND. 1/2 HARD.		42428-PC-59 REV'D. PME



CR65, COMP 302, COND. ANNEALED, PER SPEC MIL-S-5059, .062 THICK.

FINISH: E300 PER SPEC MIL-F-14072.

*Collins 580-0025-00.

NOTES:

1. ALL RELIEF RADII $\frac{1}{16}$ MAX.
2. $\frac{1}{16}$ MAX. INSIDE BEND RADII.
3. ALL SHARP CORNERS MAY HAVE $\frac{3}{32}$ MAX. R. OPTIONAL.
4. ALL SCREW THREADS PER BUREAU OF STANDARDS HANDBOOK H28.

COLLINS PART NO.	ITEM	REQD	PART NO.	DESCRIPTION	MATL.	MATL. SPEC.
LIST OF MATERIAL						
COLLINS PART NO. 558-0425-003						

DRAWN <i>HENRY</i> CHECKED <i>Ran</i> APPROVED UNLESS OTHERWISE SPECIFIED: DECIMAL DIMENSIONS INCLUDING HOLE SIZES MAY VARY $\pm .008$ FRACTIONAL DIMENSIONS INCLUDING HOLE SIZES MAY VARY $\pm 1/64$ MACHINED ANGLES MAY VARY $\pm 1^\circ$ SHEARED ANGLES MAY VARY $\pm .25^\circ$ BROKEN ANGLES MAY VARY $\pm 1^\circ$ ECCENTRICITY BETWEEN ANY DIAMETERS ON THE SAME CENTERLINE SHALL NOT EXCEED .010 TOTAL INDICATOR READING. ALL DIMENSIONS ARE FINISH DIMENSIONS INCLUDING APPLIED FINISH AND ARE GIVEN IN INCHES.	COLLINS RADIO CO. CEDAR RAPIDS, IOWA 1421A - PH 51-95 SIGNAL CORPS REVIEWED <i>PME</i> APPROVED <i>HLV</i> DATE <i>30 DEC 55</i>	DEPARTMENT OF THE ARMY SIGNAL CORPS ENGINEERING LABORATORIES FORT MONMOUTH NEW JERSEY SM-C-249074	
	APPLICATION SM-D-343631 558-0410-003 / SM-C-249059 S-DL-248775 COLLINS NO. QTY. NEXT ASSY USED ON	RACK-LOW SCALE 2/1	